



**Design a case
management system
to your district's
exact specifications
with EXCENT® Tera**

.....

"We knew the software system we were using to track and report our special education data needed an update, and we knew that teachers and service providers needed computers to help reduce their paperwork overload. We contracted with Horizon Software Systems [now GET] because they agreed to build what we wanted. The EXCENT Tera program... has surpassed our expectations."

- RICHARD RENDELL
DIRECTOR OF SPECIAL EDUCATION
JACKSON (MI) ISD

Special education case management is fundamentally the same from state to state and district to district, but every district has unique interpretations and needs. Rather than trying to make every district fit into a standardized system, Global Education Technologies (GET) offers a flexible and customizable case management solution – EXCENT Tera.

Your district's EXCENT Tera system will be built around a common core of database elements dictated by state and federal requirements. The GET team will work closely with you to evaluate your current forms, reports and processes to create an EXCENT Tera system designed specifically for your district. With EXCENT Tera you'll immediately see the savings in increased efficiency, decreased errors, and a reduction in paperwork.

EXCENT Tera streamlines and organizes all of your case management processes including medical information, transportation scheduling, discipline records, and state child-count reporting. A built-in interactive calendar based reminder system helps users keep track of meetings, deadlines, and communication with parents and providers. You can even automate your Medicaid expense recovery with our add-on EXCENT Medicaid Module.

The EXCENT Tera Advantage

- Save time and money with the automation of all your critical case management processes, including state child count reporting, Annual IEP Review tracking and more.
- Customize forms, letters and reports to your district's exact specifications.
- Simplify your process – enter data once and it is available throughout the system to generate forms, letters and reports.
- Stay in compliance with state and federal regulations without lifting a finger. Core data elements are regularly and automatically updated to reflect changes.
- No additional technology investment typically needed. EXCENT Tera is accessed via the Internet or using your existing network.



www.GETk12.com • 800.231.3144



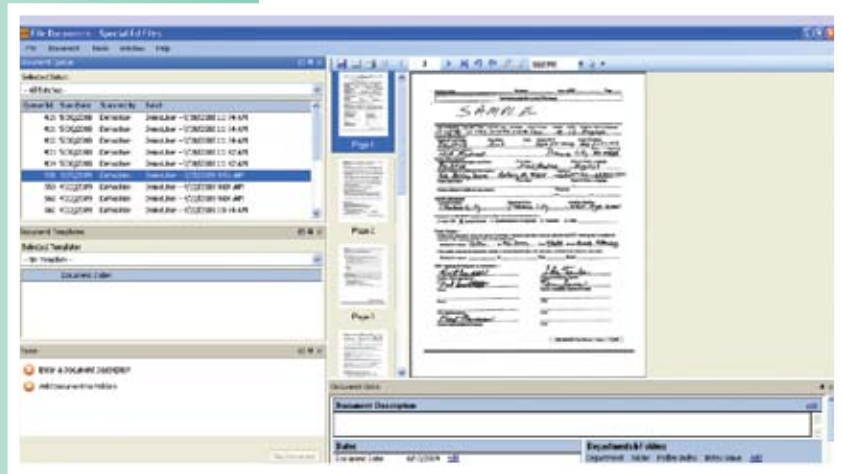
CEO Image Systems can streamline your case management practices even more!

Save time and money with comprehensive document scanning and electronic records management

EXCENT® Tera can help you reduce paperwork and better manage students receiving special services but you're still left with a mountain of forms, documents and correspondence all across your district. CEO Image Systems has helped countless school districts automate their records management processes, enhance staff efficiency, and reduce paper document storage.

CEO Image Systems provides state of the art scanning and electronic records management technology at reasonable prices that will:

- Reduce staff time spent filing and searching for documents
- Eliminate costly document storage
- Address compliance mandates
- Streamline business processes
- Reduce paper and help your district go green
- Prevent important documents from being lost or damaged



CEO Image Systems is a preferred partner of GET and provides an integrated scanning and document management solution for EXCENT Tera users.

For more information about document scanning and electronic records management contact CEO Image Systems at 800.523.1066 or www.ceoimage.com.

Empty your filing cabinets!

CEO Image Systems lets you access documents quickly, easily, and securely. Our state-of-the-art solution:

- Has powerful security to protect system access, user rights, and confidentiality of records
- Works with hundreds of scanner brands and models
- Seamlessly integrates with EXCENT Tera by using a unique Id# that links scanned, electronically filed documents to the appropriate student record in EXCENT Tera

Contact the GET team today...
www.GETk12.com • 800.231.3144

